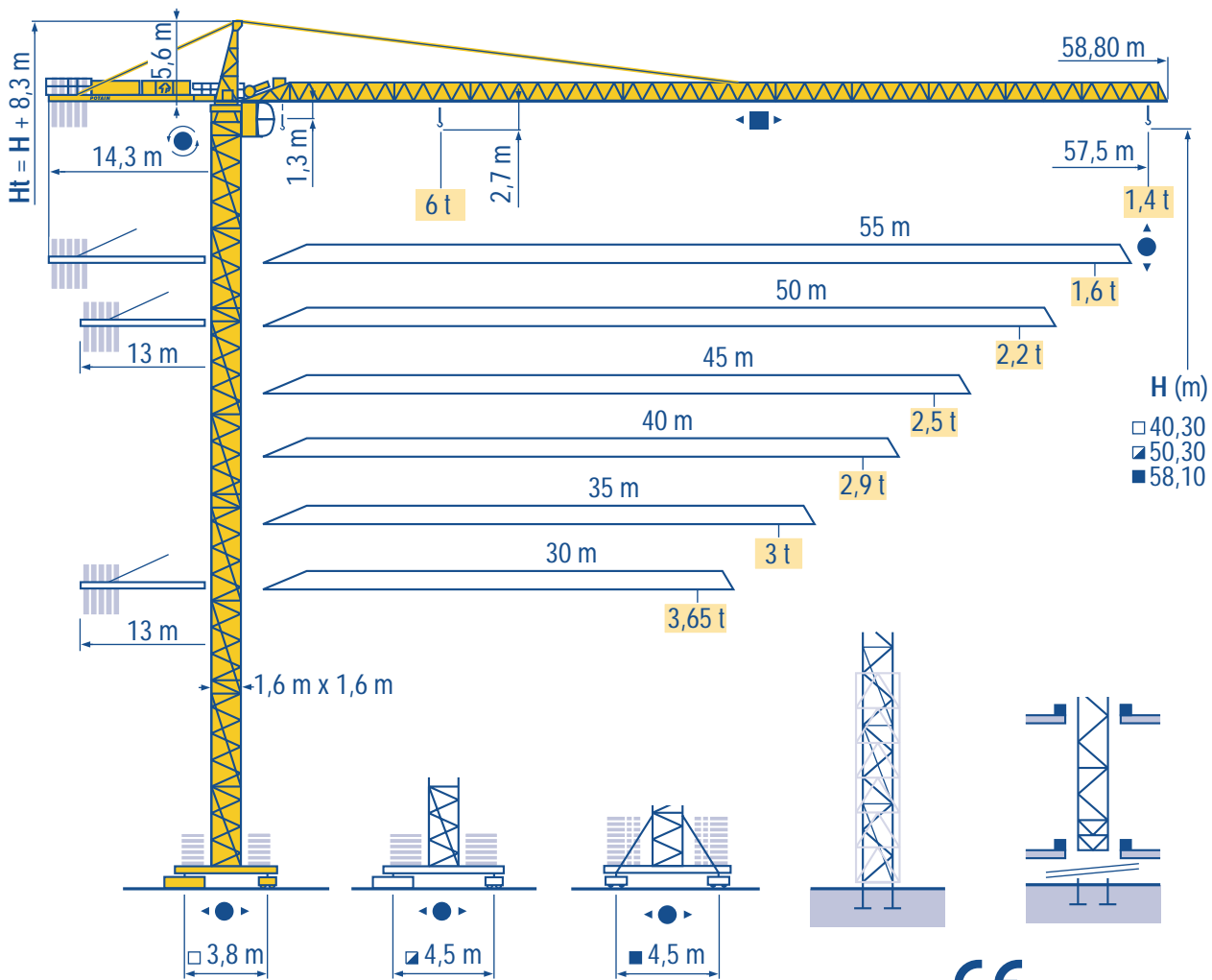


# CITY CRANE MD 125 B



HD  
HDM



HDT



GTMR



CITY CRANE



TOPKIT MD  
MAXI MD



MAXI TOPKIT



Topless MDT



MR



CE FEM 1.001-A3



**POTAIN**

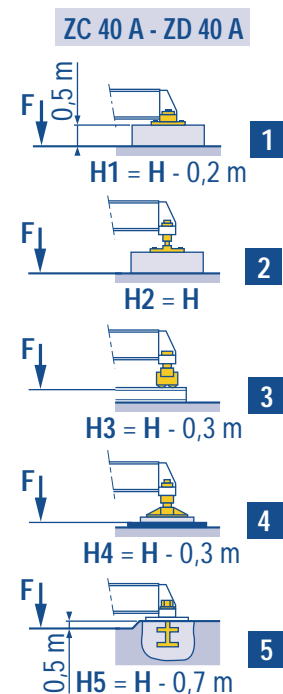
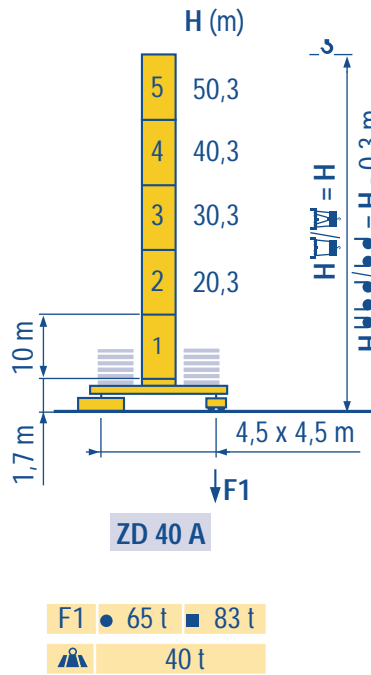
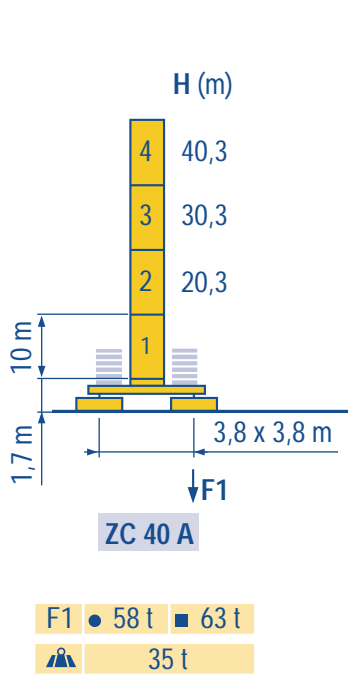
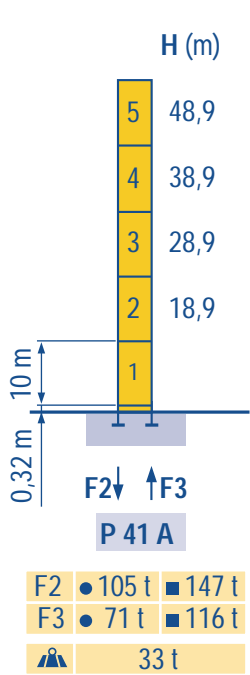
LSP 1

**Mat / Réactions**  
**Maste / Eckdrücke**  
 City 1,6 m

**F** **Masts / Reactions**  
**D** **Mástil / Reacciones**  
 City 1,6 m

**GB** **Telescopico 1,6 m**  
**E** **塔身/反力**  
 City 1,6 m

**I**  
**C**

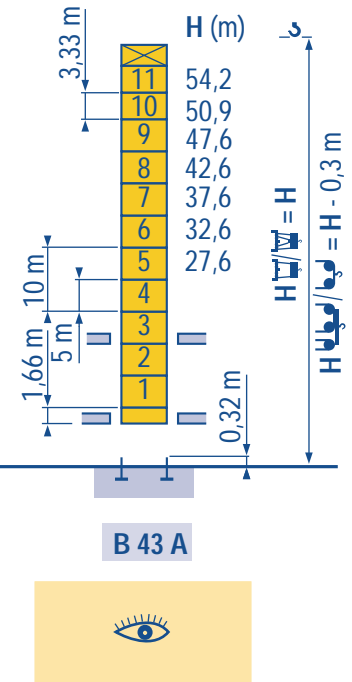
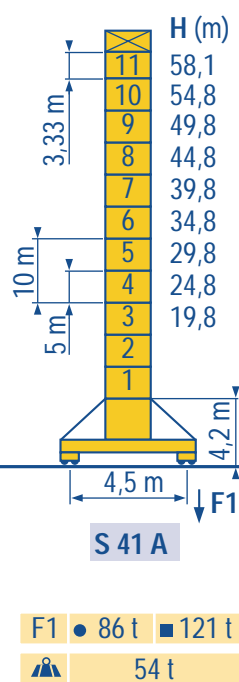
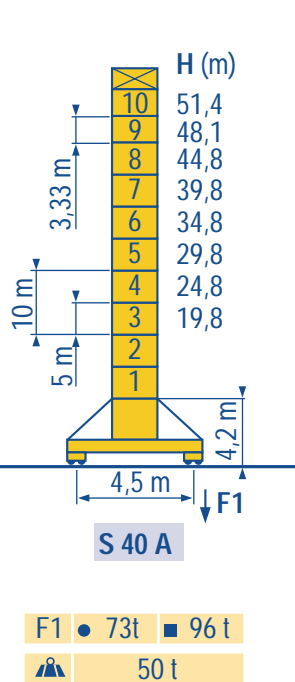
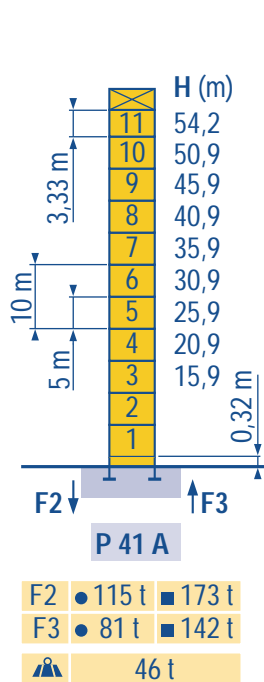


**Telescopable 1,6 m**  
**Teleskopierbar 1,6 m**

**F** **Telescopic 1,6 m**  
**D** **Telescopico 1,6 m**

**GB** **Telescopico 1,6 m**  
**E** **可顶升 1,6 m**

**I**  
**C**



Voir télescopage sur dalles  
 ● Réactions en service  
 ■ Réactions hors service  
 A vide sans lest (ni train de transport) avec fleche et hauteur maximum.

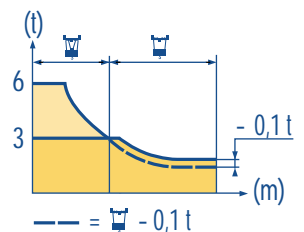
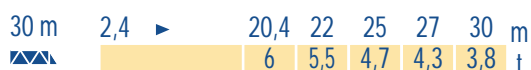
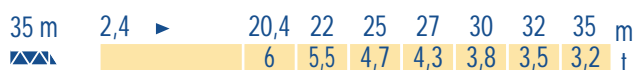
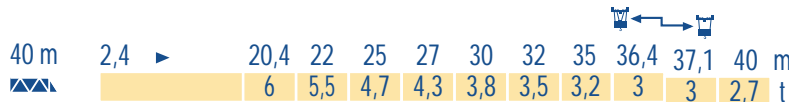
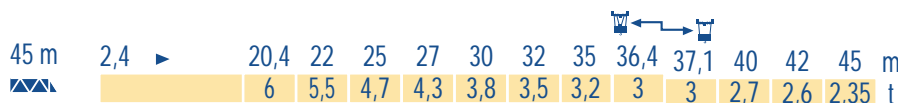
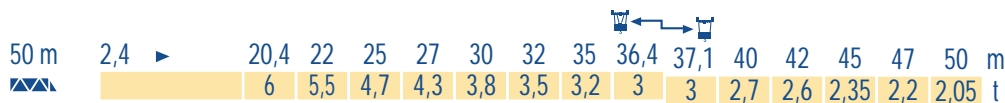
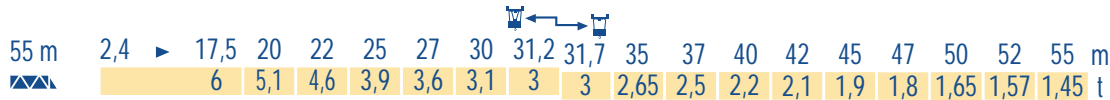
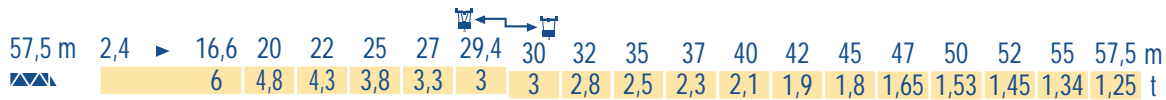
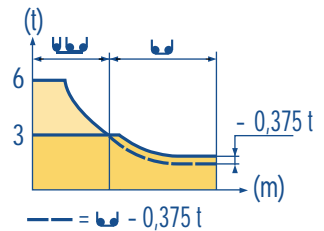
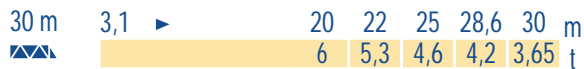
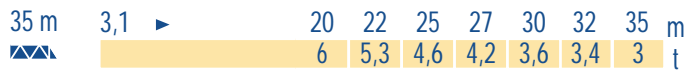
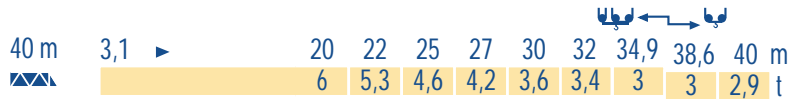
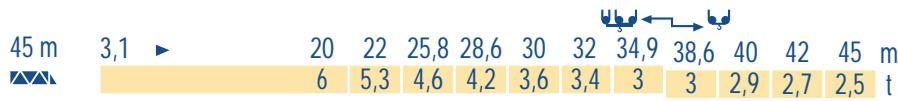
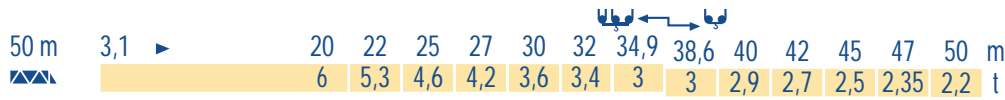
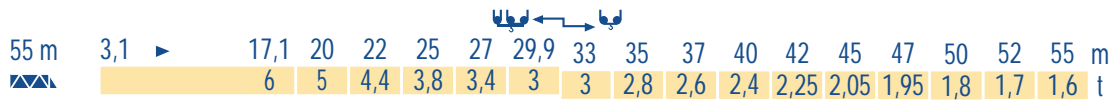
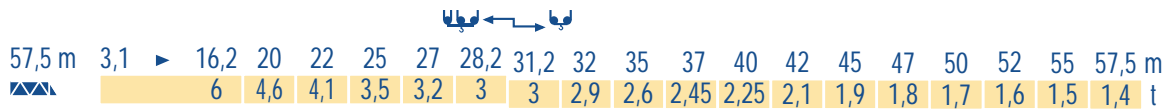
**F** See climbing crane  
 Reactions in service  
 Reactions out of service  
 Without load, ballast (or transport axes), with maximum jib and maximum height.

**GB** Consultare gru in cavedio  
 Reazioni in servizio  
 Reazioni fuori servizio  
 A vuoto, senza zavorra (ne assali di trasporto) con braccio massimo e altezza massima.

Siehe kletterkrane im gebäude  
 ● Reaktionskräfte in Betrieb  
 ■ Reaktionskräfte außer Betrieb  
 Ohne Last, Ballast (und Transportachse), mit Maximalausleger und Maximalhöhe.

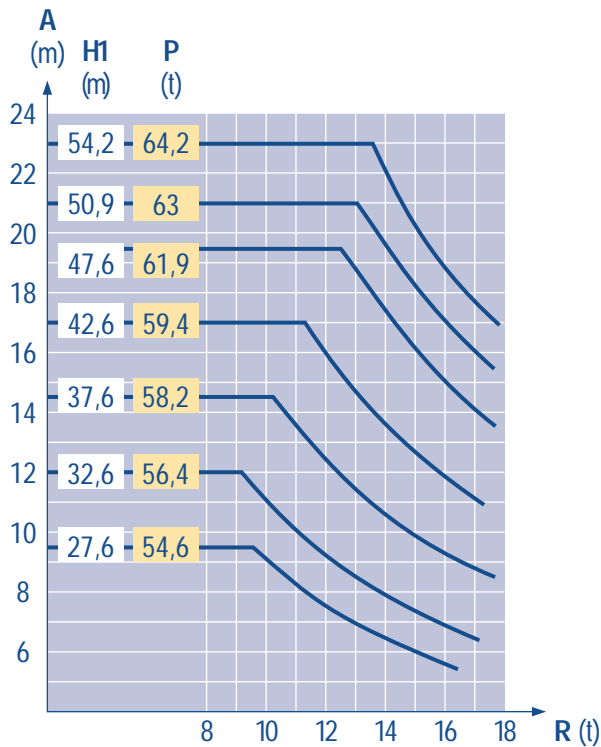
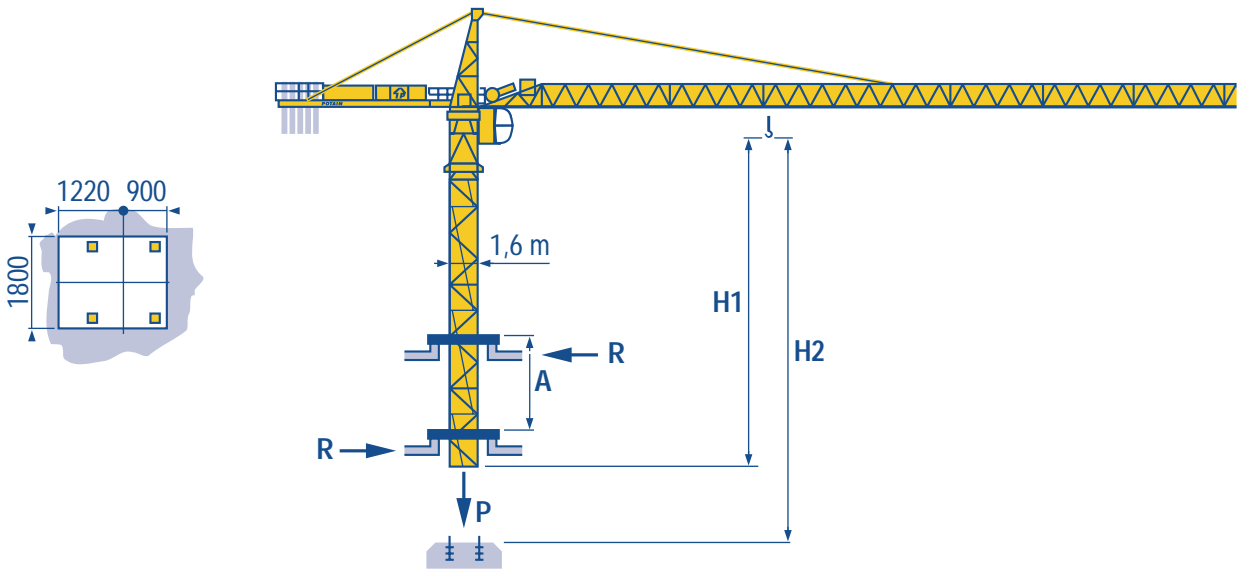
**D** Vea grua trepadora  
 Reacciones en servicio  
 Reacciones fuera de servicio  
 Sin carga, sin lastre, (ni tren de transporte), flecha y altura máxima.

**E** 見楼板顶升  
**工作状况下的反应**  
**非工作状况下的反应**  
 空载无压重也无运输车有吊臂和最大高度



LSP 1

B 43 A



LSP 1

A Distance entre cadres  
H1 Hauteur grue  
P Poids de la grue (en service)  
R Réaction horizontale

F

Distance between collars  
Crane height  
Crane weight (in service)  
Horizontal reaction

GB

Distanza fra i telai  
Altezza gru  
Peso della gru (in servizio)  
Reazione orizzontale

I

A Abstand zwischen den Rahmen  
H1 Kranhöhe  
P Krangewicht (in Betrieb)  
R Horizontalkräfte

D

Distancia entra marcos  
Altura grúa  
Peso de la grúa (en servicio)  
Reaccion horizontal

E

各附着框之间距离  
工作状态下塔机高度  
工作状态下塔机重量  
水平反力

C

Lest de contre-flèche  
Gegenauslegerballast

F  
D

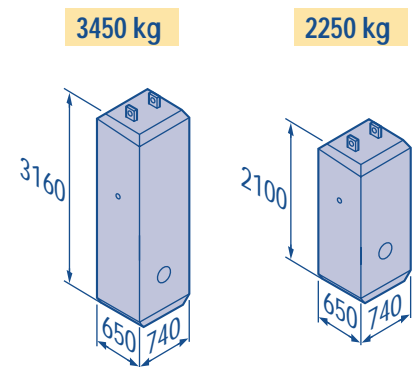
Counter-jib ballast  
Lastre de contra flecha

GB  
E

Contrappeso  
平衡臂重

I  
C

			3450 kg	2250 kg	 (kg)
57,5 m		14,3 m	5	-	17 250
55 m		14,3 m	4	1	16 050
50 m		13 m	4	1	16 050
45 m		13 m	3	2	14 850
40 m		13 m	4	-	13 800
35 m		13 m	3	1	12 600
30 m		13 m	2	2	11 400



LSP 1

Lest de base  
Grundballast





F  
D

Base ballast  
Lastre de base








GB  
E



Zavorra di base  
压重

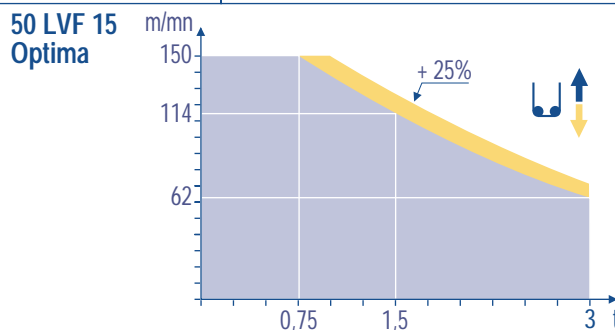
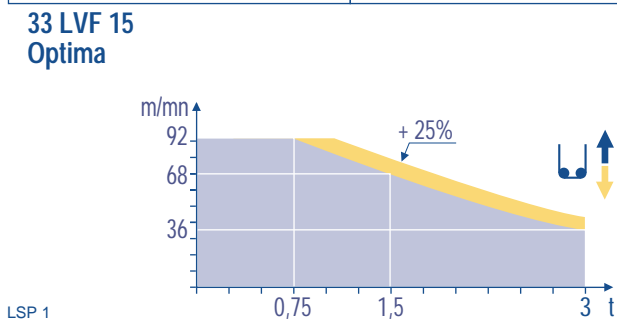
I  
C



∅1,6 m	ZC 40 A - ● >	H (m)	40,3	30,3	20,3						
		 (t)	65	60	55						
∅1,6 m	ZD 40 A - ● >	H (m)	50,3	40,3	30,3	20,3					
		 (t)	70	55	45	45					
∅1,6 m	S 40 A - ● >	H (m)	51,4	48,1	44,8	39,8	34,8	29,8	24,8	19,8	
		 (t)	84	72	54	36	36	36	36	36	
∅1,6 m	S 41 A - ● >	H (m)	58,1	54,8	49,8	44,8	39,8	34,8	29,8	24,8	19,8
		 (t)	114	102	78	54	36	36	36	36	36

LSP 1

		U ↑			UU ↑			ch - PS hp	kW		
	25 PC 15	m/min	6	30	60	3	15	30	25	18,4	260 m
		t	3	3	1,5	6	6	3			
	33 PC 15	m/min	6	37,5	75	3	19	37,5	33	24	260 m
		t	3	3	1,5	6	6	3			
33 LVF 15 Optima	m/min	3 → 12 → 36 → 48 → 68 → 92	1,5 → 6 → 18 → 24 → 34 → 46			30	22	260 m			
	t	3 3 3 2,25 1,5 0,75	6 6 6 4,5 3 1,5								
50 LVF 15 Optima	m/min	5 → 20 → 62 → 80 → 114 → 150	2,5 → 10 → 31 → 40 → 57 → 75			50	37	398 m			
	t	3 3 3 2,25 1,5 0,75	6 6 6 4,5 3 1,5								
	4 D3 V3	m/min	15 - 30 - 58					4	3		
	RCV 145	tr/min U/min rpm	0 → 0,8					2 x 6	2 x 4,4		
ZC 40 A ZD 40 A 	RT 224	m/min	25					2 x 4	2 x 2,9		
S 40 A 	RT 324 R ≥ 10 m	m/min	12,5 - 25					2 x 7	2 x 5,2		
S 41 A 	RT 443 A1 2V R ≥ 10 m	m/min	15 - 30					4 x 5	4 x 3,7		

CEI 38 	IEC 38	kVA	
400 V (+6% -10%) 50 Hz		25 PC : 40 kVA 33 PC : 50 kVA 33 LVF : 50 kVA 50 LVF : 65 kVA	84/534 - 87/405



	Levage Distribution Orientation Translation Conforme aux directives CEE 84/534 et 87/405 sur le niveau acoustique	<b>F</b>	Hoisting Trolleying Slewing Travelling In compliance with the EEC 84/534 and 87/405 Instructions on noise level	<b>GB</b>	Sollevamento Distribuzione Rotazione Traslazione Conforme alle direttive CEE 84/534 e 87/405 sul livello acustico	<b>I</b>
	Heben Katzfahren Schwenken Kranfahren Gemäss EWG-Richtlinien 84/534 und 87/405 für den Schall-Leistungspegel	<b>D</b>	Elevación Distribución Orientación Traslación Conforme con las directivas CEE 84/534 y 87/405 sobre el nivel acustico	<b>E</b>	起升 变幅 回转 行走 符合 CEE 84/534 - CEE 87/405 声晌度规定	<b>C</b>

Ref. 2000.05 LSP 1



18.Rue de Charbonnières, B.P. 173  
F-69132 ECULLY Cedex  
Tél. (33)04.72.18.20.20  
Fax (33)04.72.18.20.00  
http://www.potain.com  
E-mail : mkt@potain.fr

### CITY CRANE MD 125 B

Copyright.Reproduction interdite © POTAIN 2000

Deutschland  
POTAIN GmbH Tel : 06.105.704.0

Italia  
POTAIN S.p.A. Tel : 0.331.49.33.11

Singapore  
POTAIN PTE LTD Tel : (00.65) 227.1550

修改在地方  
 Modifiche riservate  
 Modificaciones reservadas  
 Subject to modification  
 Änderungen vorbehalten  
 Modifications réservées  
 Printed in France  
 Réalisation Headlines