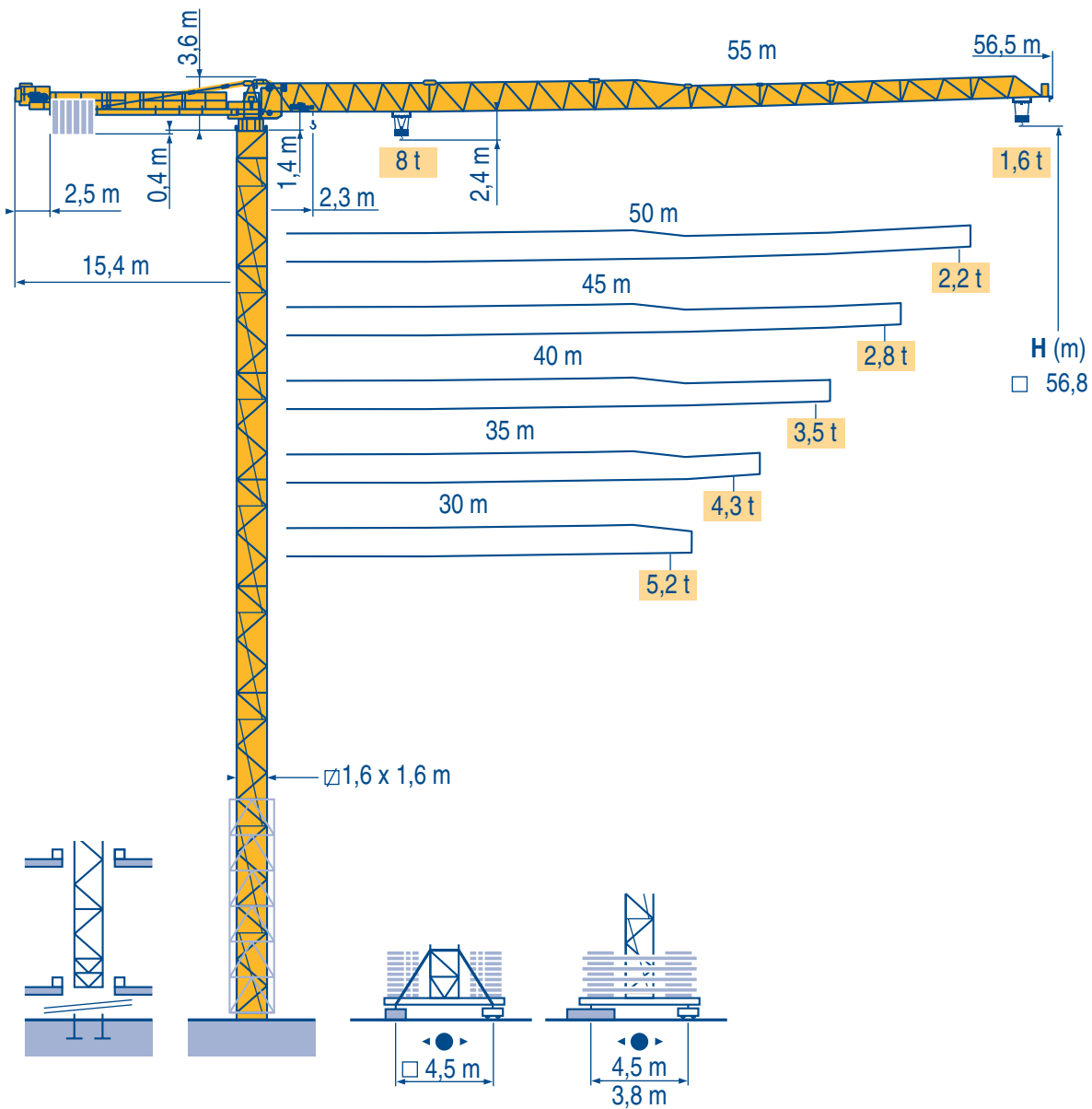


# Topless MDT 132 G8



LQI 2

CE FEM 1.001-A3

- Igo HD  
Igo M  
HDM
- HDT
- GTMR
- CITY CRANE
- TOPKIT MD  
MAXI MD
- MAXI TOPKIT
- Topless MDT
- MR



Mat / Réactions  
Maste / Eckdrücke  
Télescopable 1,6 m  
Teleskopierbar 1,6 m

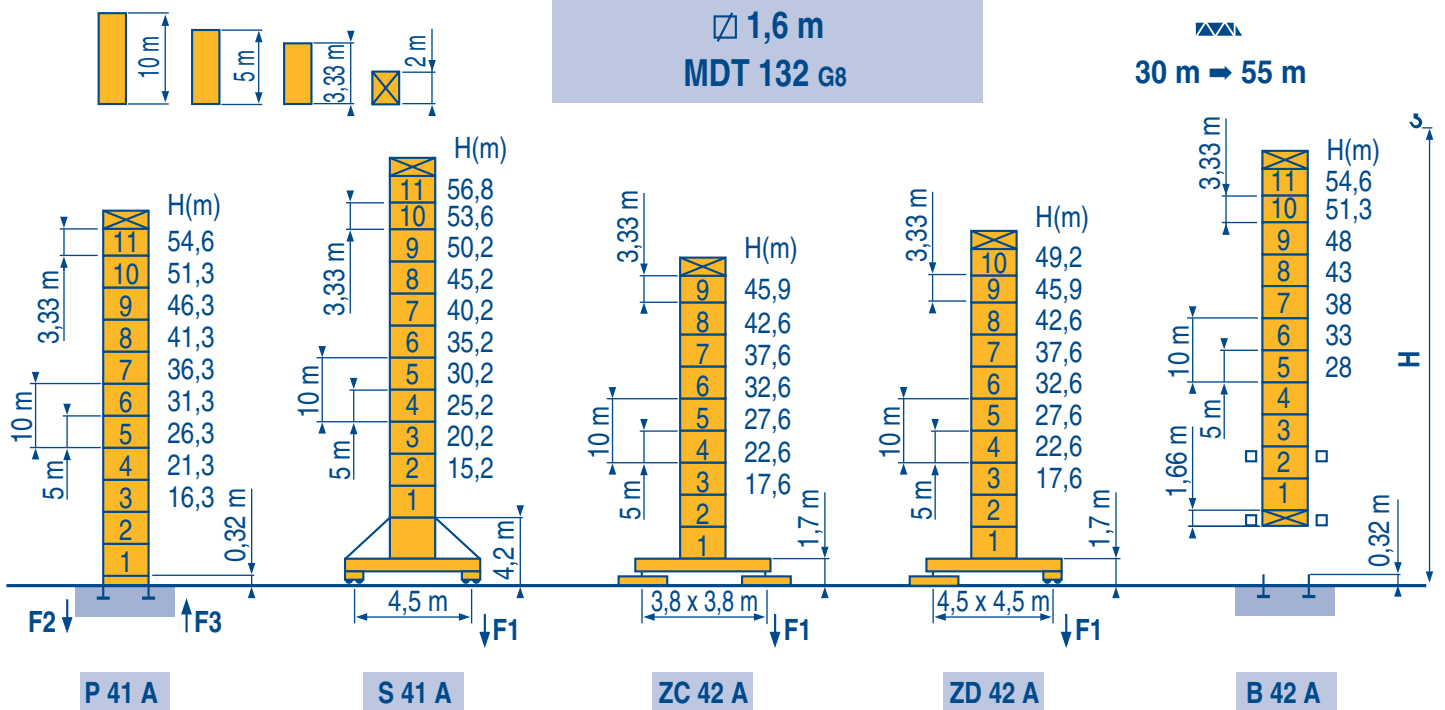
F  
D  
F  
D

Masts / Reactions  
Mástil / Reacciones  
Telescopic 1,6 m  
Telescopico 1,6 m

GB  
E  
GB  
E

Torre / Reazioni  
Tramo/Reacções  
Telescopico 1,6 m  
Telescopagem 1,6 m

I  
P  
I  
P



F2 ● 103 t ■ 171 t  
F3 ● 69 t ■ 141 t  
46 t

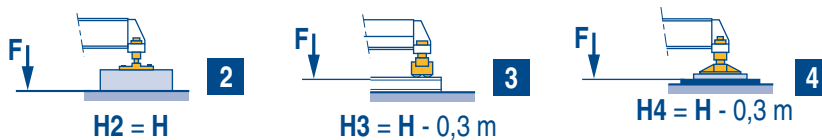
F1 ● 83 t ■ 113 t  
53 t

F1 ● 71 t ■ 89 t  
47 t

F1 ● 65 t ■ 85 t  
49 t



**ZC 42 A - ZD 42 A**



LQI 3

Icon	F	D	GB	E	I	P
Eye	Voir télescopage sur dalles	Siehe Kletterkrane im Gebäude	See climbing crane	Vea grua trepadora	Consultare gru in cavedio	Ver telescopagem sobre lages
●	Réactions en service	Reaktionskräfte in Betrieb	Reactions in service	Reacciones en servicio	Reazioni in servizio	Reacções em serviço
■	Réactions hors service	Reaktionskräfte außer Betrieb	Reactions out of service	Reacciones fuera de servicio	Reazioni fuori servizio	Reacções fora de serviço
⚖	A vide sans lest (ni train de transport) avec flèche et hauteur maximum.	Ohne Last, Ballast (und Transportachse), mit Maximalausleger und Maximalhöhe.	Without load, ballast (or transport axles), with maximum jib and maximum height.	Sin carga, sin lastre, (ni tren de transporte), flecha y altura máxima.	A vuoto, senza zavorra (ne assali di trasporto) con braccio massimo e altezza massima.	Sem carga (nem trem de transporte)- sem lastro com lança e altura máximas.

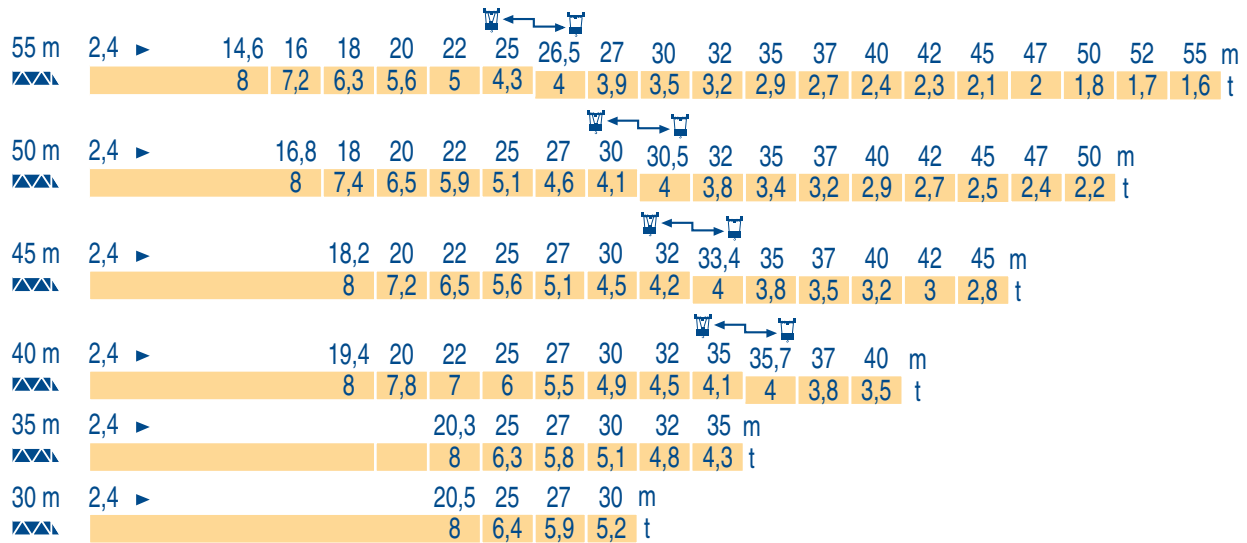
Courbes de charges  
Lastkurven



Load diagrams  
Curvas de cargas



Curve di carico  
Curva de cargas



LQI 1

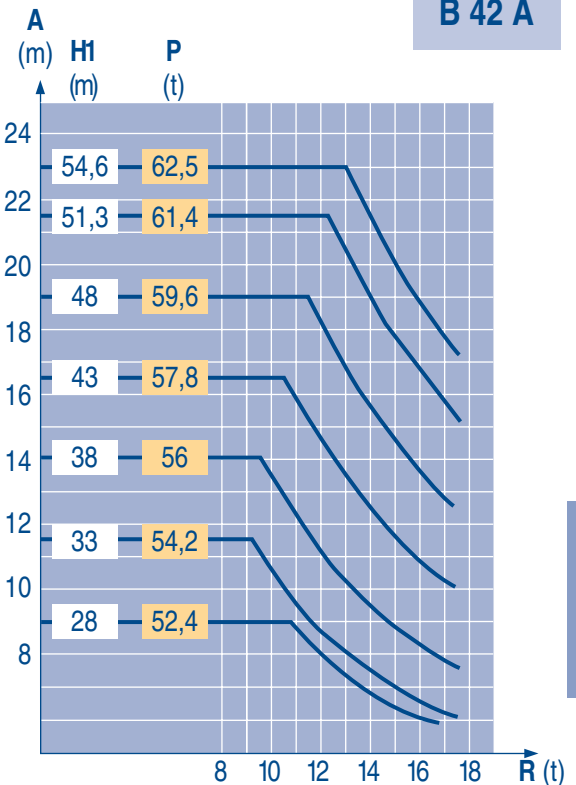
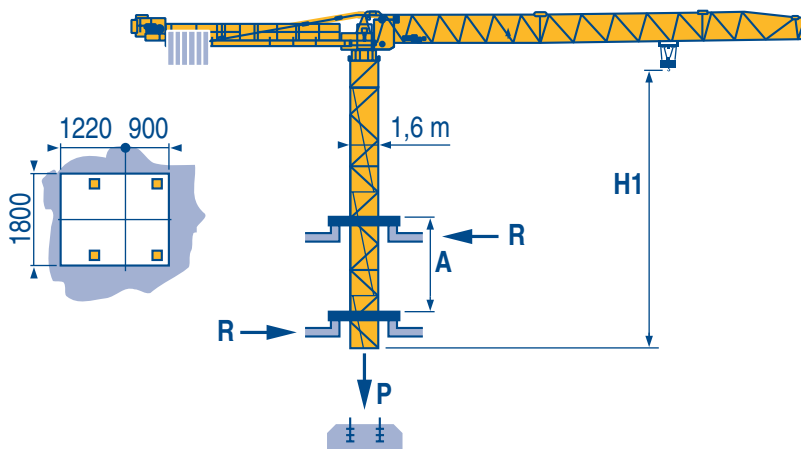
Télescopage sur dalles  
Kletterkrane im Gebäude



Climbing crane  
Telescopage gruas trepadoras



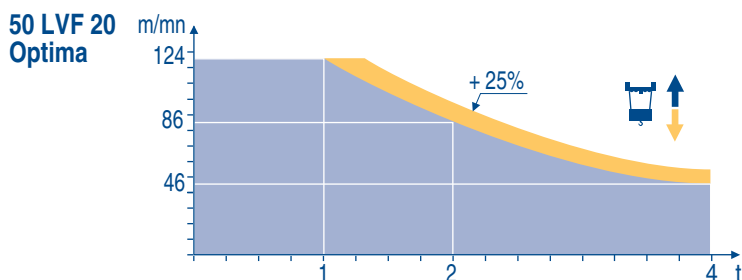
Gru in cavedio  
Telescopagem sobre lages



LQI 2

Symbol	French (F)	German (D)	German (GB)	English (E)	Italian (I)	Portuguese (P)
A	Distance entre cadres	Abstand zwischen den Rahmen	Distance between collars	Distancia entra marcos	Distanza fra i telai	Distância entre quadros
H1	Hauteur grue	Kranhöhe	Crane height	Altura grúa	Altezza gru	Altura da grua
P	Poids de la grue (en service)	Krangewicht (in Betrieb)	Crane weight (in service)	Peso de la grúa (en servicio)	Peso della gru (in servizio)	Peso da grua (em serviço)
R	Réaction horizontale	Horizontalkräfte	Horizontal reaction	Reaccion horizontal	Reazione orizzontale	Reacção horizontal

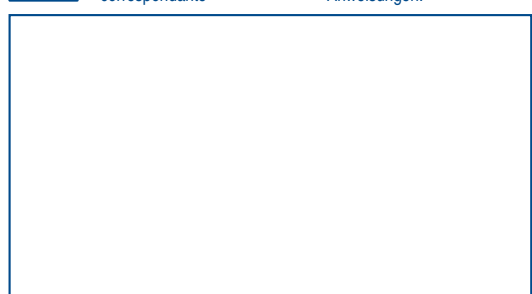
														ch - PS hp	kW				
	50 LVF 20 Optima	m/min	4 → 16 → 46 → 60 → 86 → 124							2 → 8 → 23 → 30 → 43 → 62					50	37	600 m > 600		
		t	4	4	4	3	2	1	8	8	8	6	4	3					
	5,5 DVF	m/min	0 → 80														7,5	5,5	
	R - 6	tr/min U/min rpm	0 → 0,80														2 x 4	2 x 3	
ZD 42 A ZC 42 A 	RT 324	m/min	12,5 - 25														2 x 7	2 x 5,2	
S 41 A 	RT 443 A1 2V	m/min	15 - 30														4 x 6,8	4 x 5	
R ≥ 10 m																			
CEI 38		IEC 38	kVA																
400V (+6%-10%) 50 Hz			50 LVF 20 : 65 kVA							2000 / 14									



LQI 5

	Levage	F	Heben	D	Hoisting	GB	Elevación	E	Sollevamento	I	Elevação	P
	Distribution		Katzfahren		Trolleying		Distribución		Distribuzione		Distribuição	
	Orientation		Schwenken		Slewing		Orientación		Rotazione		Rotação	
	Translation		Kranfahren		Travelling		Traslación		Traslazione		Translação	
	Conforme aux directives CEE sur le niveau acoustique		Gemäss EWG-Richtlinien für den Schall-Leistungspegel		In compliance with the EEC Instructions on noise level		Conforme con las directivas CEE sobre el nivel acustico		Conforme alle direttive CEE sul livello acustico		Conforme as directivas CEE sobre o nível acústico	
	Nous consulter		Auf Anfrage		Consult us		Consultarnos		Consultateci		Consultar-nos	

Document commercial non contractuel. Pour toute information technique se référer à la notice correspondante. Unverbindliches Vertriebsdokument. Für technische Informationen, siehe die entsprechenden Anweisungen. This commercial document is not legally binding. For any technical information, please refer to the corresponding instructions. Documento comercial no contractual. Para cualquier información técnica, ver la noticia correspondiente. Documento commerciale non vincolante, per tutte le informazioni tecniche fare riferimento al catalogo istruzioni. Documento comercial não contratual. Para qualquer informação técnica complementar consultar as respectivas instruções.



**POTAIN**

Manitowoc Crane Group

18, rue de Charbonnières - B.P.173  
69132 ECULLY Cedex - France  
Tél. : (33) 4 72 18 20 20  
Fax. : (33) 4 72 18 20 00  
www.manitowoccrane.com www.potain.com  
Copyright.Reproduction interdite © POTAIN 2000

**Topless MDT 132 G8**  
Réf. 1999.01 LQI 7

Reserva de modificaciones / Modifiche riservate / Modificaciones reservadas / Änderungen vorbehalten / Subject to modification / Modifications réservées / Printed in France / Réalisation HeadLines